



NOTICE OF PUBLIC HEARING

You are hereby notified that the Planning and Zoning Commission of the City of Maitland, Florida, which also sits as the Local Planning Agency and the Land Development Regulation Commission will hold a public hearing. The hearing will be held at 6:30 P.M., Thursday, March 1, 2018, in the Maitland City Hall Council Chambers, 1776 Independence Lane, Maitland, Florida 32751. The purpose of the hearing is to take public comment, both written and oral, concerning a petition filed for **ZONING AMENDMENT - PLANNED DEVELOPMENT - OPTION 1**.

Maitland Landings, LLC, 7557 W Sand Lake Rd, #181, Orlando, Florida 32819 has filed the application. The applicant requests to rezone properties described as: 1) 30-21-30-9448-00-481, 2) 30-21-30-9448-00-822, 3) 30-21-30-9448-00-846, 4) 30-21-30-9448-00-849, 5) 30-21-30-9448-00-521, 6) 30-21-30-9448-00-440, 7) 30-21-30-9448-00-850 from Planned Development, RS-3, single-family residential, and R1-AA, single-family residential to a PD, planned development zoning district. As proposed, the applicant requests approval for 29 single-family residential lots. The property contains 8.72 acres more or less and is generally located west of N. Orlando Avenue/U.S. 17-92 and north of Maitland Boulevard.

The public is invited to attend the hearing and may comment orally or in writing. Interested parties may examine the application in the office of the Zoning Administrator, Monday-Friday, 8:00 A.M. - 5:00 P.M., 1776 Independence Lane, Maitland, Florida, 32751. Questions concerning the notice of public hearing may be directed to the Community Development Department at (407) 539-6212.

Any person who desires to appeal any decision made at this meeting or hearing will need a record of the proceedings and, for this purpose, may need to ensure that a verbatim record of the proceedings is made which includes testimony and evidence upon which the appeal is to be based. Persons with disabilities needing assistance to participate in any of these proceedings should contact the City Clerk's office (407) 539-6219 48 hours in advance of the meeting.

Jacqueline Holt
Zoning Administrator/Planner III



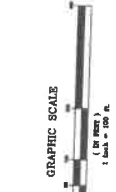
MATLAND LANDINGS

CITY OF MATLAND
MATLAND LANDINGS, LLC
1200 N. DUNE LAKE ROAD, STE 101
DUNEDIN, FL 33511



DATE	02/17/11
DESIGNED BY	[Name]
CHECKED BY	[Name]
PROJECT NO.	1000
CLIENT	[Name]

- ### SITE DATA:
1. INCLUDE FACILITY LOCATIONS OF MATLAND AVE, DUNE AVE, & [Name] INTERSECTION.
 2. INCLUDE FACILITY LOCATIONS OF MATLAND AVE, DUNE AVE, & [Name] INTERSECTION.
 3. INCLUDE FACILITY LOCATIONS OF MATLAND AVE, DUNE AVE, & [Name] INTERSECTION.
 4. INCLUDE FACILITY LOCATIONS OF MATLAND AVE, DUNE AVE, & [Name] INTERSECTION.
 5. INCLUDE FACILITY LOCATIONS OF MATLAND AVE, DUNE AVE, & [Name] INTERSECTION.
 6. INCLUDE FACILITY LOCATIONS OF MATLAND AVE, DUNE AVE, & [Name] INTERSECTION.
 7. INCLUDE FACILITY LOCATIONS OF MATLAND AVE, DUNE AVE, & [Name] INTERSECTION.
 8. INCLUDE FACILITY LOCATIONS OF MATLAND AVE, DUNE AVE, & [Name] INTERSECTION.
 9. INCLUDE FACILITY LOCATIONS OF MATLAND AVE, DUNE AVE, & [Name] INTERSECTION.
 10. INCLUDE FACILITY LOCATIONS OF MATLAND AVE, DUNE AVE, & [Name] INTERSECTION.
 11. INCLUDE FACILITY LOCATIONS OF MATLAND AVE, DUNE AVE, & [Name] INTERSECTION.
 12. INCLUDE FACILITY LOCATIONS OF MATLAND AVE, DUNE AVE, & [Name] INTERSECTION.
 13. INCLUDE FACILITY LOCATIONS OF MATLAND AVE, DUNE AVE, & [Name] INTERSECTION.
 14. INCLUDE FACILITY LOCATIONS OF MATLAND AVE, DUNE AVE, & [Name] INTERSECTION.
 15. INCLUDE FACILITY LOCATIONS OF MATLAND AVE, DUNE AVE, & [Name] INTERSECTION.
 16. INCLUDE FACILITY LOCATIONS OF MATLAND AVE, DUNE AVE, & [Name] INTERSECTION.
 17. INCLUDE FACILITY LOCATIONS OF MATLAND AVE, DUNE AVE, & [Name] INTERSECTION.
 18. INCLUDE FACILITY LOCATIONS OF MATLAND AVE, DUNE AVE, & [Name] INTERSECTION.
 19. INCLUDE FACILITY LOCATIONS OF MATLAND AVE, DUNE AVE, & [Name] INTERSECTION.
 20. INCLUDE FACILITY LOCATIONS OF MATLAND AVE, DUNE AVE, & [Name] INTERSECTION.

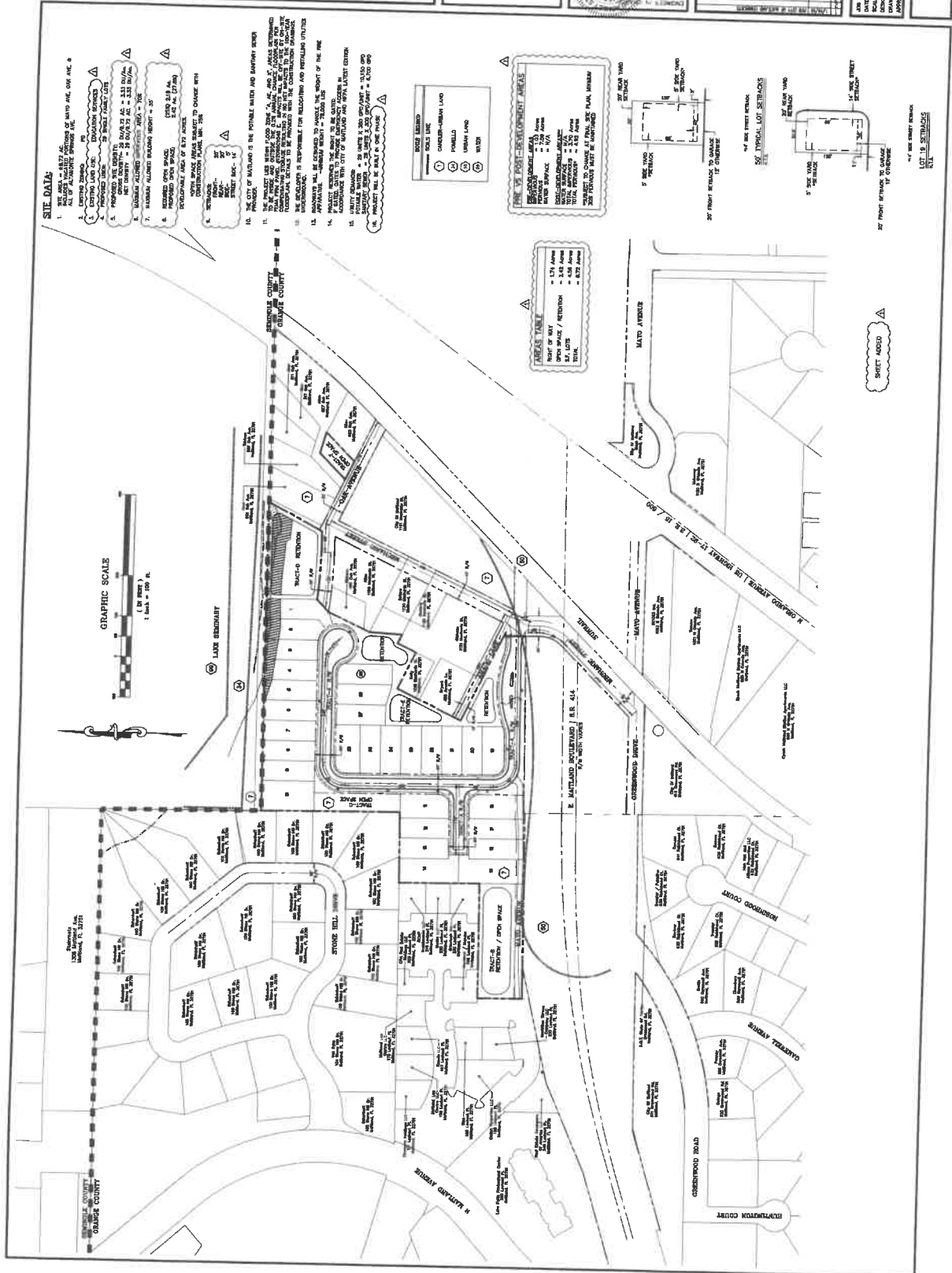


LOT 18 SETBACKS

5' SIDE YARD SETBACK
15' SIDE STREET SETBACK
5' REAR YARD SETBACK
5' FRONT SETBACK TO ADJACENT LOT CENTERLINE
5' SIDE STREET SETBACK
5' SIDE STREET SETBACK

TYPICAL LOT SETBACKS

5' SIDE YARD SETBACK
15' SIDE STREET SETBACK
5' REAR YARD SETBACK
5' FRONT SETBACK TO ADJACENT LOT CENTERLINE
5' SIDE STREET SETBACK
5' SIDE STREET SETBACK



TARIFF TABLE

LOT 18 AREAS	174 Acres
OPEN SPACE / PARKING	454 Acres
STREET LOTS	454 Acres
TOTAL	872 Acres

SHEET ADDED

LOT 18 SETBACKS